

Reliable, low-center design
for perfect sealing

Lockcanroll Canseamer A

#305/ #401

Food
Only

Automatic
one-touch

Perfect
Seaming

sure AS



CHECK POINT



Korean
production



One-touch full
automatic



3 second fast
seaming



Low-center
Design



Compatible with
various cans



sure AS

Reduce fixed costs -! canseamer can be done alone!

CANSEAMER CAN BE DONE ALONE!



**Twice
Efficiency**



drinks in various sizes
For general packaging
About 10 seconds

When packing canseamer
an automatic sensor/without
mold replacement
About 5 seconds



Peak time &
group order

Reduced number
of additional inputs



Group order/mass
Production

Increase work efficiency

**Now! For sure
Compare!**



No VS YES

If you don't have A canseamer	VS	Lockcanroll Canseamer
Waiting & lead time Longer production time	Mass production A group order	Lightly OK!
For peak time Increased labor costs	Personnel Expense Fixed costs	Alone OK!
Delivery/due to A packaging accident Claims increase	Delivery& At the time of packaging	Definitely OK!

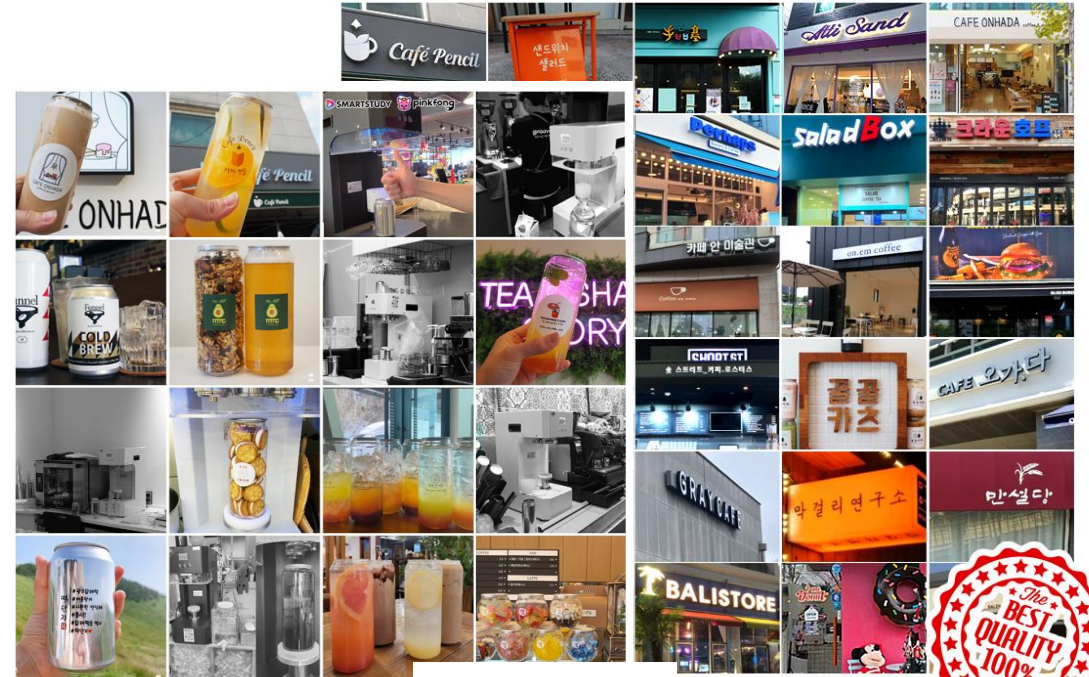
CHECK POINT

Why you need a canseamer!

- ✓ Keeps taste and freshness long by blocking air and sunlight
- ✓ Safe and complete sealed packaging delivery
- ✓ Enable special marketing of our products
- ✓ Use of recyclable environmentally friendly materials
- ✓ For those who want to reduce the use of plastic

It's a product that many CEOs use themselves

Recognized lockcanroll canseamer



There's no limit to shilling!

Appeal to the customers for the event or service!
It can be used in various forms, not drinks!

Satisfaction of use Good!

Easy operation for anyone

If you put the contents in and press it, the sealing is done!

[Easy Operation Way]



1. put in



2. Press the button



3. The end of the sealing

#305 Canseamer Supplied Mold

180ml, 360ml, 500ml

(Provide 3 molds)

※ 1,000ml sealed without mold

#401 Canseamer Supplied Mold

400ml, 850ml (Provide 2 molds)

※ 1,250ml sealed without mold

Why do you need molds?

Each can has a different height, so it is sealed according to the height for a perfect sealing.

What happens if the mold doesn't fit?

The can is not fixed, so it cannot be sealed normally, and the can and cap may be separated, so the contents may leak.

02/ POINT

Convenient one-touch automatic method

One-touch automatic method, not manual type



[Other companies and existing products]

Manual lift method is inconvenient to work

[Lockcanroll Canseamer A]

One-touch automatically convenient

03/ POINT

Low center of gravity design that does not rotate the can Perfect 3 seconds fast simming

The can doesn't spin, so it stays in the form of the drink



[low-center design]

Maintain the form of the drink

[3 seconds fast seaming]

Speed to resolve large orders

04/ POINT

Premium Metal Case

Premium metal case that adds classicity
One design that's perfect for everywhere you
install it



05/ POINT

Customizing New Technologies

Foot-activated push pedal function
Hand-operated non-contact sensor function



※ The above optional
features can be installed
as a separate option.

Technology certified patented product

Reliable KC Certified Products

Possessing various certifications with unique patent-registered Products certified by the National Accreditation Inspection Agency



DISTRIBUTION

Securing a dedicated distribution network

Large distribution warehouses provide containers without a hitch

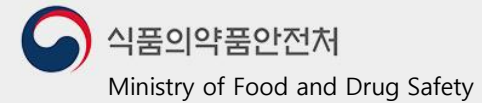


Safe Lockcanroll can

Reliable safe empty cans passed FDA scrutiny

Detailed inspection of 11 chemical components, including antimony, nickel, and lead, is performed below the standard

Provide undetected and secure products.



항목	기준	결과	비고
중금속
...

PET 수입식품검사서

항목	기준	결과	비고
중금속
...

알루미늄 수입식품검사서

항목	기준	결과	비고
중금속
...

수입신고서확인증

FOOD CONTAINER SERIES

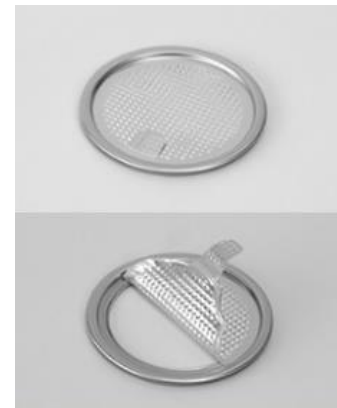
Compatible #305 cans and caps

You can use various cans to choose the size and material you want
Compatible with different caps with all-round can-sealing

PET #305 Food Container



Safety cap



Full open cap



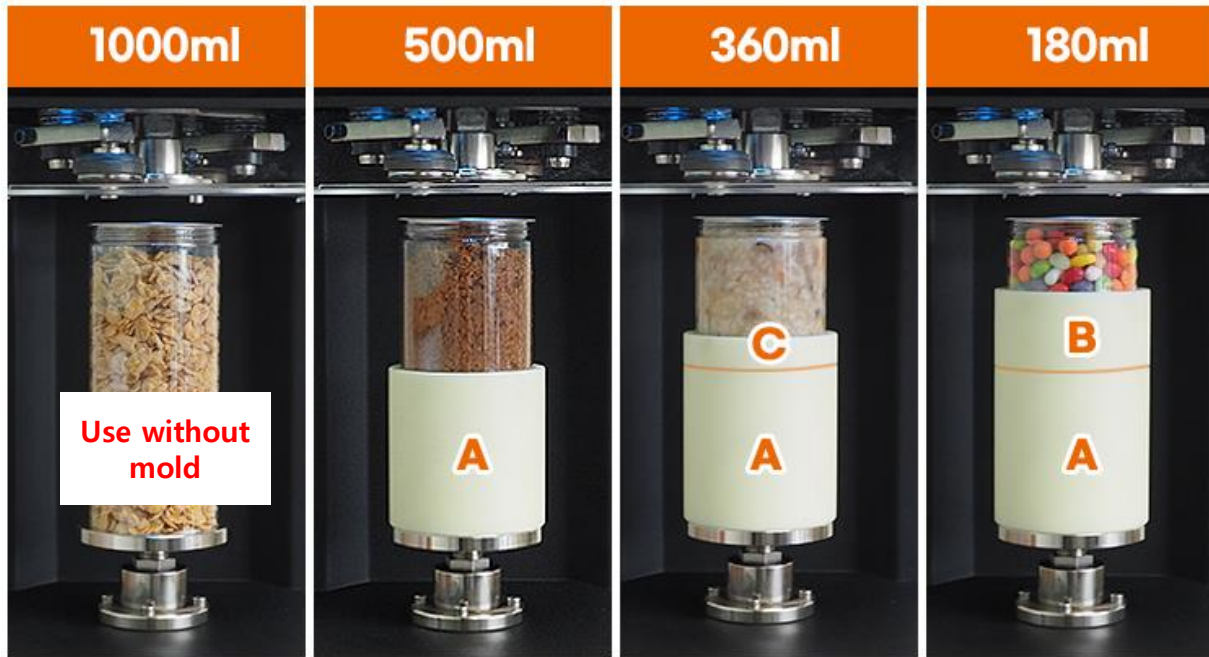
Transparent cap



HOW TO USE THE MOLD

A002(#305) Canseamer Mold

If you purchase A002 (#305) for food. Provide 3 molds by default
If you use a 1000ml can, you can use it without mold.
You can combine the mold according to the capacity you want



- **When using 1000ml** : Use without mold
- **When using 500ml** : **A**(500ml) Mold Only
- **When using 360ml** : **A**(500ml) + **C**(360ml)
Use molds combined
- **When using 180ml** : **A**(500ml) + **B**(180ml)
Use molds combined

FOOD CONTAINER SERIES

Compatible #401 cans and caps

You can use various cans to choose the size and material you want
Compatible with different caps with all-round can-sealing

PET #401 Food Container



Safety cap



Full open cap



PP transparent cap



Fermentation Cap



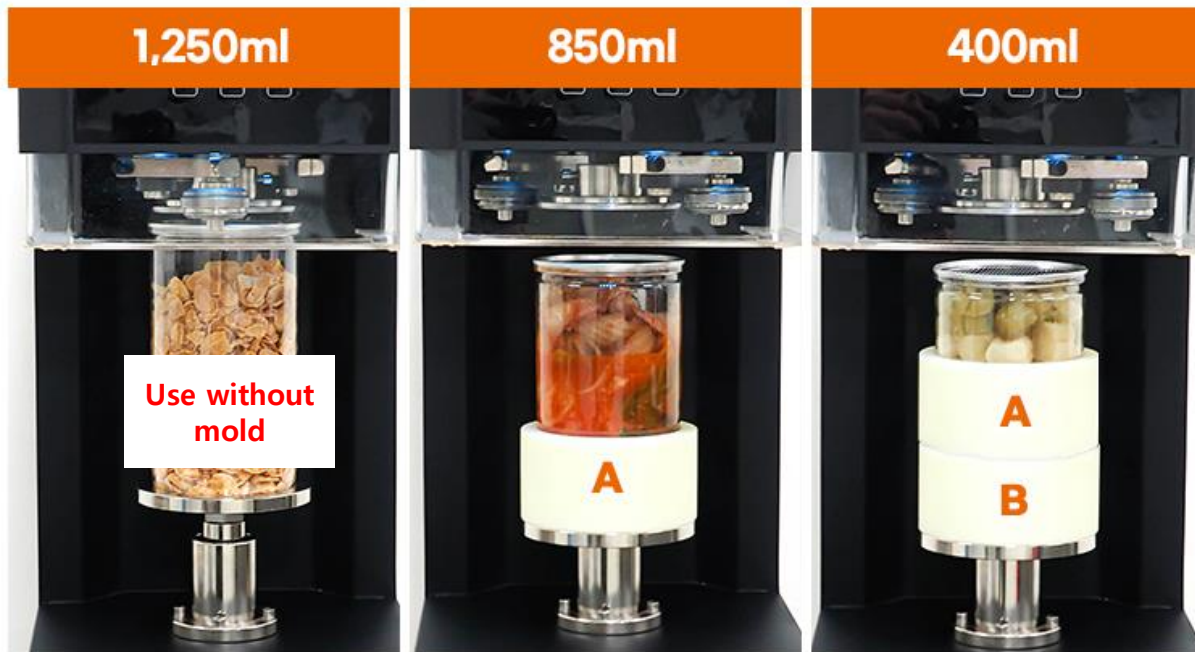
the outside

the inner side

HOW TO USE THE MOLD

A003(#401) Canseamer Mold

If you purchase A003 (#401) for food. Provide 2 molds by default
If you use a 1250ml can, you can use it without mold.
You can combine the mold according to the capacity you want



- **When using 1250ml** : Use without mold
- **When using 850ml** : **A**(850ml) Mold Only
- **When using 400ml** : **A**(850ml) + **B**(400ml)
Use molds combined

UNIQUE LOCKCANROLL CANSEAMER

The difference in quality
Feel it!



SEAMING CHUCK

The most important thing is seaming chuck

The seaming chuck is the most important thing for canned goods.
A small error in the chuck determines the sealing level.

Lockcanroll canseamer
seaming chuck is

Through 100,000 processing tests

You have captured
the best simming point.



Outstanding quality / Just check this out.



Low-center design The can is not spinning.

Keep the drink in its form without wavering even in high-speed rotation



3 seconds fast seaming All food and drink available.

Seaming chuck and double roller perfectly seam the airframe



All empty can be sealed Various cans at once.

The size you want, the material you want
Can be used in many ways at once



Production of domestic certification Products certified for quality

Domestic R&D and production
Products certified for technology and quality

Questions

Q_ Does the can run?

A) The can is not spinning. Just the sealing chuck on the lid of the can. It doesn't mix.

Q Is the sealing going well?

A) No matter how much you press, it doesn't leak and even carbonic acid is sealed. However, commercial products. It is recommended that you use it for delivery purposes without being semi-permanent.

Q_ Are there many breakdowns?

A) The main customer base is a cafe or beer delivery business. Most people seal more than 100 cans a day, but they're busy, so the customer can't pay. There are cases where it has been received, but there are few instrument defects.

Q_ Is it compatible with third-party containers?

A) Can compatible third-party products!/Make sure you send the sample to the headquarters. Please use it. If there is a problem after using it, the headquarters free A/Excluded from S.

Q_AS What is the policy? (Warranty)

A) Failure and defects caused by the buyer's negligence, such as external impact or flooding. If not, 1 year free A/S is possible.

Precautions

- Never put cans in during the initialization of the cans.
- Use the supply voltage of the power supply to match the power consumption.
- Avoid moisture and use the machine in a dry environment.
- Never touch the seaming roller and seaming chuck while the machine is running.
- Please refrain from placing other objects on the machine or pressing it hard to prevent damage to the machine.
- Be careful not to open the back cover of the machine arbitrarily because it may cause an electric shock.

Product information specification



Product name

[For Food Use]
Lockcanroll canseamer

Model name

LCR-A002(#305) / A003(#401)

Safety certification number

R-R-VBG-LCR-A001

Product size

260 X 430 X 590 (mm)

Product weight

37kg

Rated voltage

110~220V/ 50~60Hz

Power consumption

260W

Manufacturing company

Human Company Co., Ltd

Country of manufacture

Korea

Thank you.



Phone cell : +82-2-6339-0754
email : resverafarm@naver.com

Fax : +82-2-6280-0754

[Showroom Visit Address]

Room 1302 (20th Daerung Techno Town, Gasan-dong, Gasan Digital 1-ro, Geumcheon-gu, Seoul)
Room 223, BIFFC Mall, 40, Muncashyul-ro, Nam-gu, Busan