

NEW
2024 model
iMAX-1



The limits of the canseamer!
I'm going for it!

LOCKCANROLL CANSEAMER

LCR-iMAX1

Leading with technology!

Made
in
Korea+

**1 liter
used** +

**LCD
Touch
Panel** +

**Low
noise
seaming** +

Reduce fixed costs -!

canseamer can be done alone!

CANSEAMER CAN BE DONE ALONE!



Twice Efficiency



drinks in various sizes
For general packaging
About 20 seconds

When packing canseamer
an automatic sensor/without
mold replacement
About 10 seconds



Peak time & group order

Reduced number of additional inputs



Group order/mass Production

Increase work efficiency

**Now! For sure
Compare!**



No VS YES

If you don't have A canseamer	VS	Lockcanroll Canseamer
Waiting & lead time Longer production time	Mass production A group order	Lightly OK!
For peak time Increased labor costs	Personnel Expense Fixed costs	Alone OK!
Delivery/due to A packaging accident Claims increase	Delivery& At the time of packaging	Definitely OK!

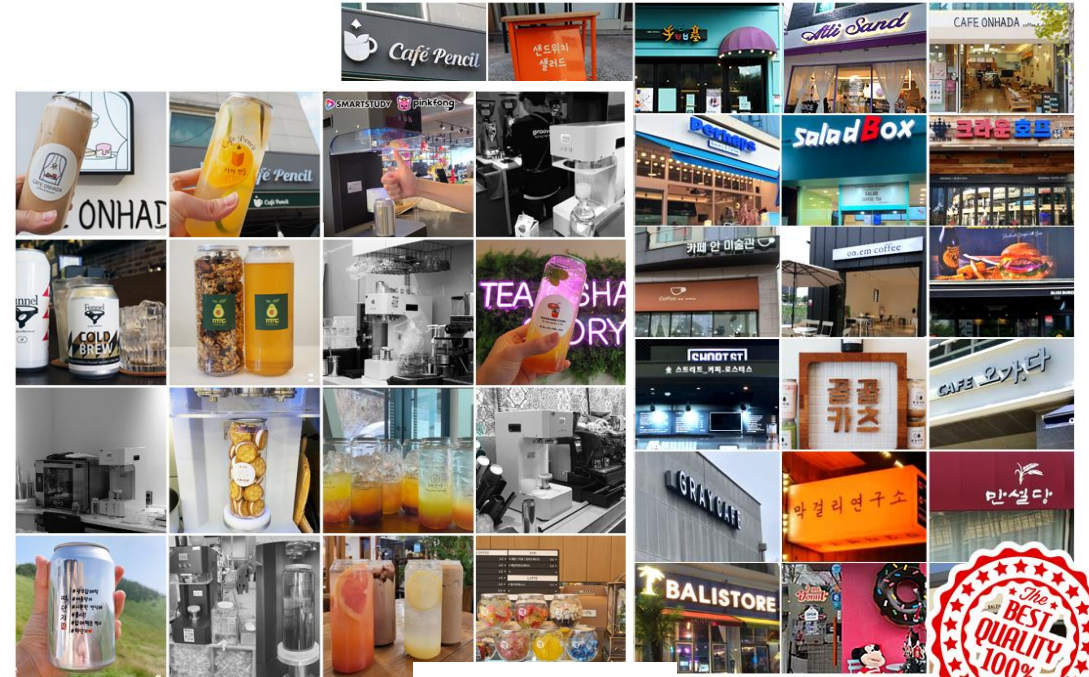
CHECK POINT

Why you need a canseamer!

- ✓ Keeps taste and freshness long by blocking air and sunlight
- ✓ Safe and complete sealed packaging delivery
- ✓ Enable special marketing of our products
- ✓ Use of recyclable environmentally friendly materials
- ✓ For those who want to reduce the use of plastic

It's a product that many CEOs use themselves

Recognized lockcanroll canseamer



★★★★★

There's no limit to shilling!

Appeal to the customers for the event or service!
It can be used in various forms, not drinks!

Satisfaction of use Good!

With more "perfect technology
and performance" reborn

Lockcanroll Canseamer iMAX1

lightened
Weight

fully
automatic
a lift

Perfect
Seaming

Stand-
alone
drive



CHECK POINT



1 liter can
can be used



One-touch LCD
full automatic



lighter
weight



No need to
change mold



Low noise
ceiling



Customization
function

01/ POINT

Slim and modern design

Upgraded to a modern two-tone design

Reduce weight to 15 kg to make it light and slim



BLACK



WHITE

02/ POINT

One-touch LCD panel fully automatic lift

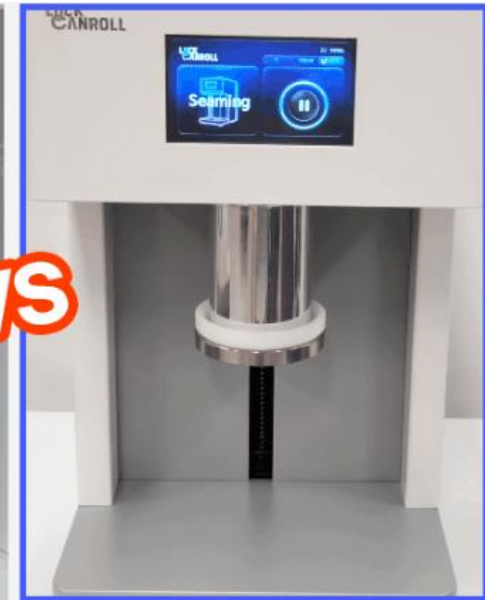
Stand-alone and easy to use with one-touch LCD panel

Safely without spilling it with an automatic lift



[Other companies and their existing products]

When you set it up, the drink might spill
The inconvenience of manual lift type work



[Lockcanroll canseamer iMAX1]

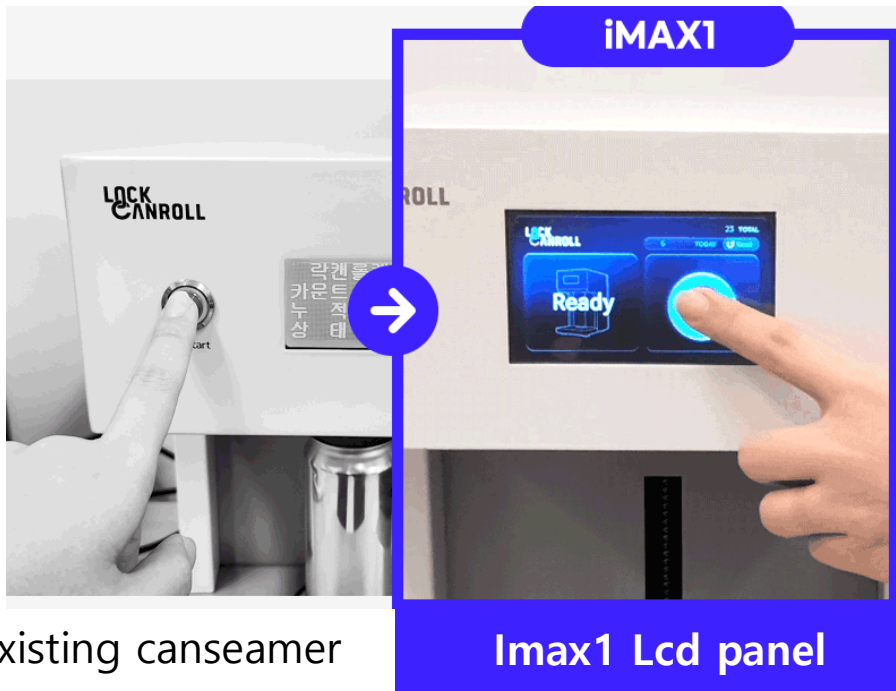
Stable with a stand-alone lift
Can setting is possible

03/ POINT

One-touch LCD panel fully automatic lift

Stand-alone and easy to use with
one-touch LCD panel

Safely without spilling it with an automatic lift



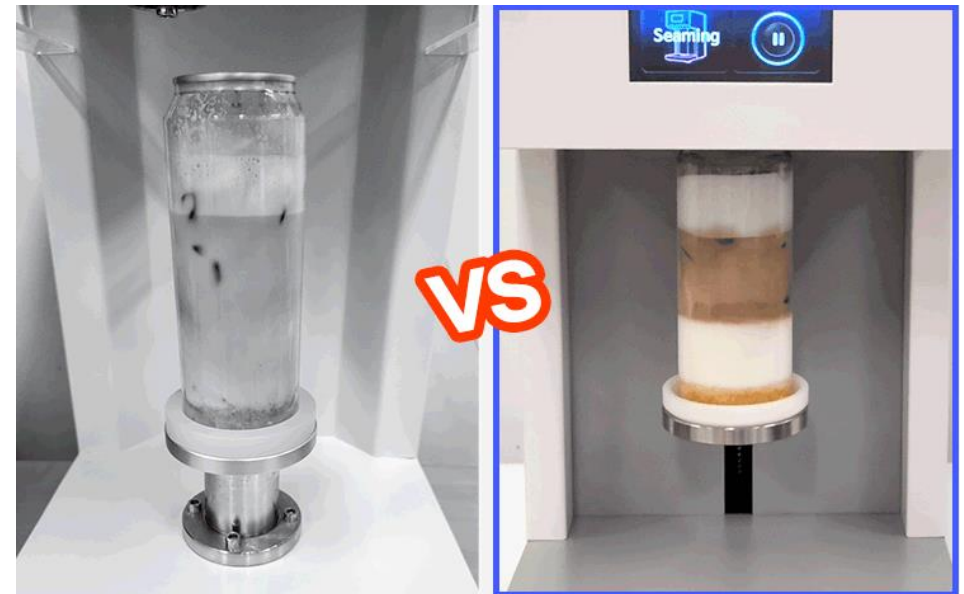
Existing canseamer

Imax1 Lcd panel

04/ POINT

can-fixing sealing / Low-Centre Design

The head rotates and the drink remains in shape
Stay the same despite the high-speed turn!



[Other companies and
their existing products]

[Lockcanroll
canseamer iMAX1]

canseamer in which a can rotates
The shape of the drink may be altered

Low center design keeps the
beverage in shape

Mold replacement NO! No need to change based on capacity!

Cans of all sizes can be used. Regardless of height, use at once without changing mold



[Other companies and their existing products]

[Lockcanroll canseamer iMAX1]

It is not compatible with the can of the product
Manually replace molds according to height and capacity

No change required depending on height and capacity
Use compatible molds

Basic Settings Compatible Mold

(long)210ml, 250ml, 330ml, 500ml, 650ml
(jar)500ml,(carbonic acid) 500ml

1Liter molds

1000ml

Additional molds

(short) 210ml, (crystal)500ml
(square) 350ml, (square) 520ml

※ purchases separately ※



Existing use 650ml

1 liter available

06/ POINT

Customizing New Technologies

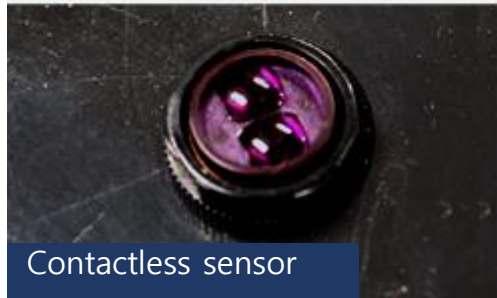
- Foot-activated push pedal function
- Hand-operated non-contact sensor function
- Features with LCD panels that are good for promoting stores and using menus



Push pedal



LCD panels



Contactless sensor

※ The above optional features can be installed as a separate option.

05/ POINT

Technology certified patented product

Reliable KC Certified Products

- Possessing various certifications with unique patent-registered
- Products certified by the National Accreditation Inspection Agency



DISTRIBUTION

Securing a dedicated distribution network

Large distribution warehouses provide containers without a hitch
Aluminum/Have many PET 330, 500ml containers
16oz 11oz



Safe Lockcanroll can

Reliable safe empty cans passed FDA scrutiny

Detailed inspection of 11 chemical components, including antimony, nickel, and lead, is performed below the standard
Provide undetected and secure products.



식품의약품안전처
Ministry of Food and Drug Safety

PET 수입식품검사서 알루미늄 수입식품검사서 수입신고서확인증

DISTRIBUTION

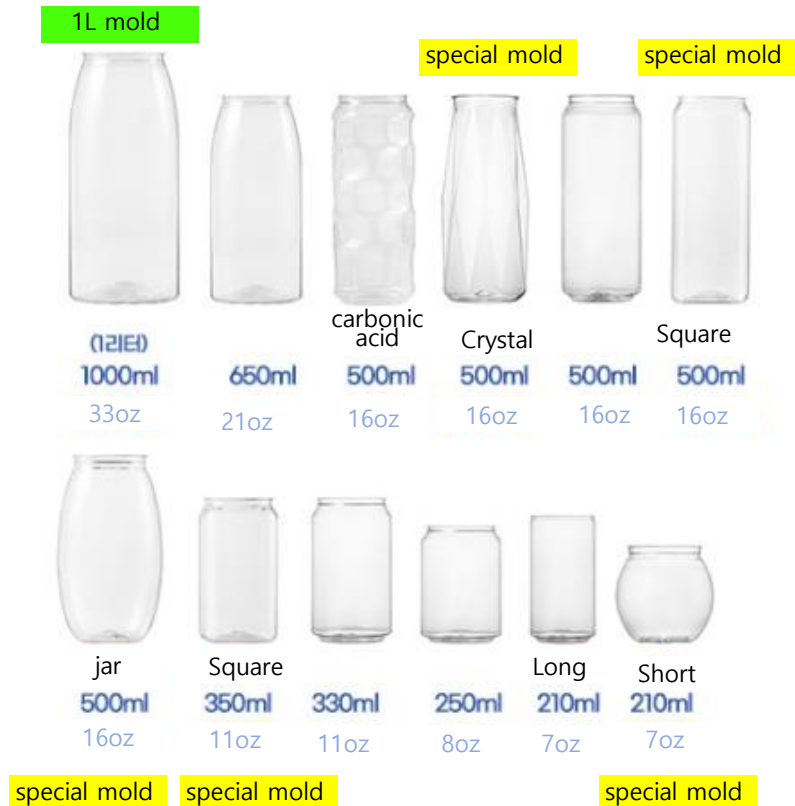
Compatible cans and caps

You can use various cans to choose the size and material you want
Compatible with different caps with all-round can-sealing

Aluminium



PET material



UNIQUE LOCKCANROLL CANSEAMER

The difference
in quality Feel it!



SEAMING CHUCK

The most important thing is seaming chuck

The seaming chuck is the most important thing for canned goods.
A small error in the chuck determines the sealing level.

Lockcanroll canseamer
seaming chuck is

Through 100,000 processing tests

You have captured
the best simming point.



Outstanding quality / Just check this out.



Low-center design The can is not spinning.

Keep the drink in its form without wavering even in high-speed rotation



3 seconds fast seaming All food and drink available.

Seaming chuck and double roller perfectly seam the airframe



Empty can be sealed Various cans at once.

The size you want, the material you want
Can be used in many ways at once



Production of domestic certification Products certified for quality

Domestic R&D and production
Products certified for technology and quality

HOW TO SETTING

Make sure to "Initialize" before using the canseamer. Please work on it!

It is essential for accurate and precise work.



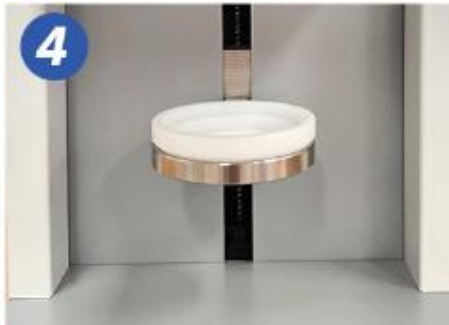
Plug in the power switch.



Turn on the power switch



Confirm that [Resetting] appears on the LCD screen.



I set it up while doing it.

※ Do not insert cans at this time!



The top seaming chuck rotates
Set the initialization settings.



After checking that the condition is normal
You have to put in the can and operate it.

Questions

Q_ Does the can run?

A) The can is not spinning. Just the sealing chuck on the lid of the can. It doesn't mix.

Q Is the sealing going well?

A) No matter how much you press, it doesn't leak and even carbonic acid is sealed. However, commercial products. It is recommended that you use it for delivery purposes without being semi-permanent.

Q_ Are there many breakdowns?

A) The main customer base is a cafe or beer delivery business. Most people seal more than 100 cans a day, but they're busy, so the customer can't pay. There are cases where it has been received, but there are few instrument defects.

Q_ Is it compatible with third-party containers?

A) Can compatible third-party products!/Make sure you send the sample to the headquarters. Please use it. If there is a problem after using it, the headquarters free A/Excluded from S.

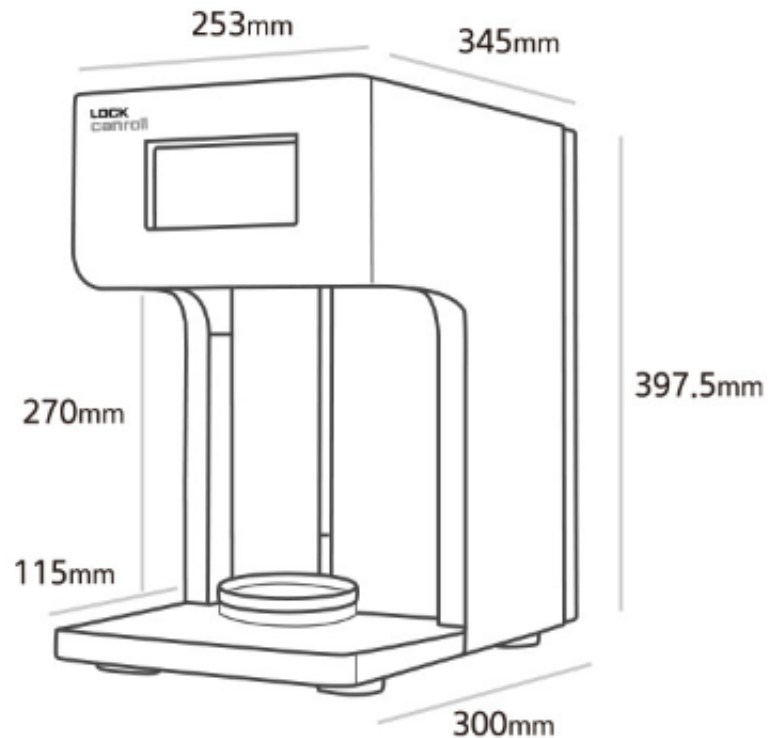
Q_AS What is the policy? (Warranty)

A) Failure and defects caused by the buyer's negligence, such as external impact or flooding. If not, 1 year free A/S is possible.

Precautions

- Never put cans in during the initialization of the cans.
- Use the supply voltage of the power supply to match the power consumption.
- Avoid moisture and use the machine in a dry environment.
- Never touch the seaming roller and seaming chuck while the machine is running.
- Please refrain from placing other objects on the machine or pressing it hard to prevent damage to the machine.
- Be careful not to open the back cover of the machine arbitrarily because it may cause an electric shock.

Product information specification



Product name

Lockcanroll canseamer

Model name

LCR-iMAX1

Safety certification number

R-R-hIn-LCR-iMAX1

Product size

253X345 X 397.5 (mm)

Product weight

15kg

Rated voltage

110~260V/ 50~60Hz

Power consumption

108W

Manufacturing company

Human Company Co., Ltd

Country of manufacture

Korea

Thank you.



Phone cell : +82-2-6339-0754
email : resverafarm@naver.com

Fax : +82-2-6280-0754

[Showroom Visit Address]

Room 1302 (20th Daerung Techno Town, Gasan-dong, Gasan Digital 1-ro, Geumcheon-gu, Seoul)
Room 223, BIFFC Mall, 40, Muncashyul-ro, Nam-gu, Busan