

LOCKCANROLL CANSEAMER EMPTY CANS & CAP (LID)

202 type

AVAILABLE CANSEAMERS

- LCR-iMAX1
- LCR-X1
- LCR-A001

202 type

AVAILABLE CANSEAMERS

- LCR-iMAX1
- LCR-X1
- LCR-A001
- LCR-C

Aluminium



PET material



Safety cap



General cap



Full open cap



NOTICE

All empty cans are for lockcanroll Canseamer only

Third-party canned products may not be compatible.

When PET cans contain hot drinks above 60°C, there is a risk of shrinking the can and releasing harmful substances.

202 type

AVAILABLE CANSEAMERS

- LCR-iMAX1
- LCR-X1
- LCR-A001
- LCR-C

NOTICE

All empty cans are for lockcanroll Canseamer only

Third-party canned products may not be compatible.

When PET cans contain hot drinks above 60°C, there is a risk of shrinking the can and releasing harmful substances.

> PET 1000ml (33oz)

Sample Photo



- SIZE : 78 X 200 (mm)

All empty cans are products without lids (caps)

Currently, empty cans are only available in **iMAX1 Canseamer**.

A Practical Use Case



202 type

AVAILABLE CANSEAMERS

- LCR-iMAX1
- LCR-X1
- LCR-A001
- LCR-C

NOTICE

All empty cans are for lockcanroll Canseamer only

Third-party canned products may not be compatible.

When PET cans contain hot drinks above 60°C, there is a risk of shrinking the can and releasing harmful substances.

> PET 650ml (21oz)

Sample Photo



- SIZE : 75 X 170 (mm)

All empty cans are products without lids (caps)

A Practical Use Case



202 type

AVAILABLE CANSEAMERS

- LCR-iMAX1
- LCR-X1
- LCR-A001
- LCR-C

NOTICE

All empty cans are for lockcanroll Canseamer only

Third-party canned products may not be compatible.

When PET cans contain hot drinks above 60°C, there is a risk of shrinking the can and releasing harmful substances.

> PET 500ml /crystal (16oz)

Sample Photo



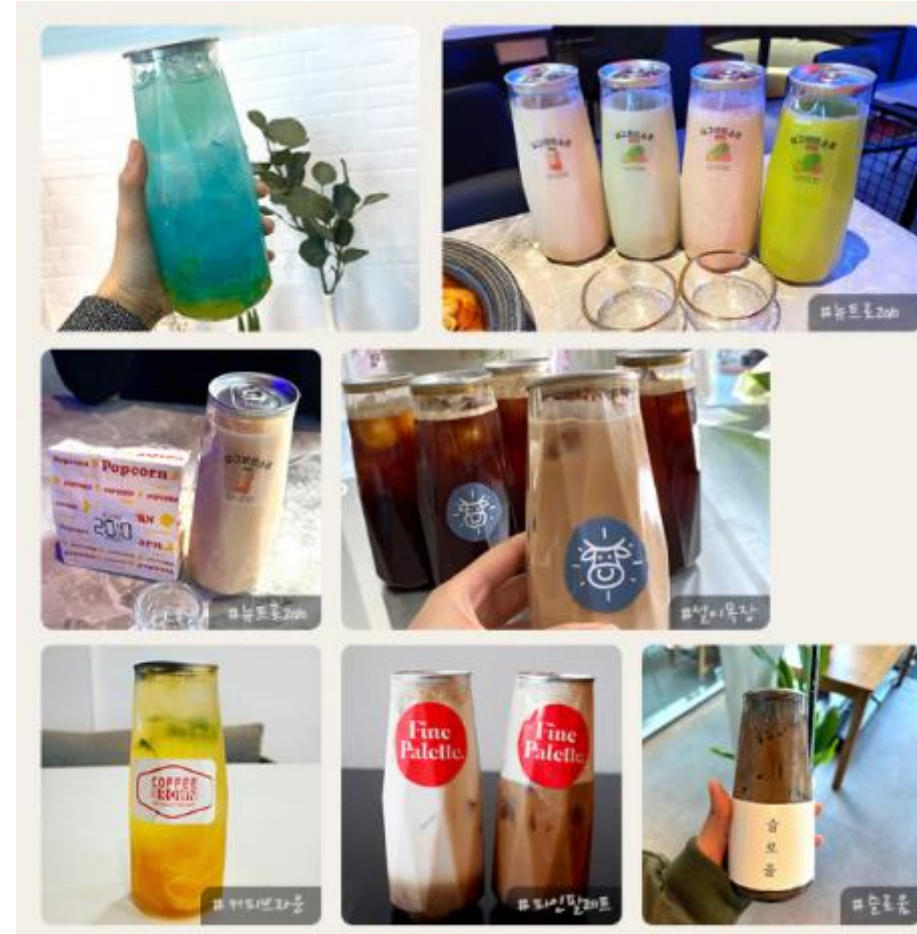
- SIZE : 71.5 X 170 (mm)

All empty cans are products without lids (caps)

Sealing is only possible in special molds

※ Special molds are purchased separately. ※

A Practical Use Case



202 type

AVAILABLE CANSEAMERS

- LCR-iMAX1
- LCR-X1
- LCR-A001
- LCR-C

NOTICE

All empty cans are for lockcanroll Canseamer only

Third-party canned products may not be compatible.

When PET cans contain hot drinks above 60°C, there is a risk of shrinking the can and releasing harmful substances.

> PET 500ml (16oz)

Sample Photo



- SIZE : 55 X 170 (mm)

All empty cans are products without lids (caps)

A Practical Use Case



202 type

AVAILABLE CANSEAMERS

- LCR-iMAX1
- LCR-X1
- LCR-A001
- LCR-C

NOTICE

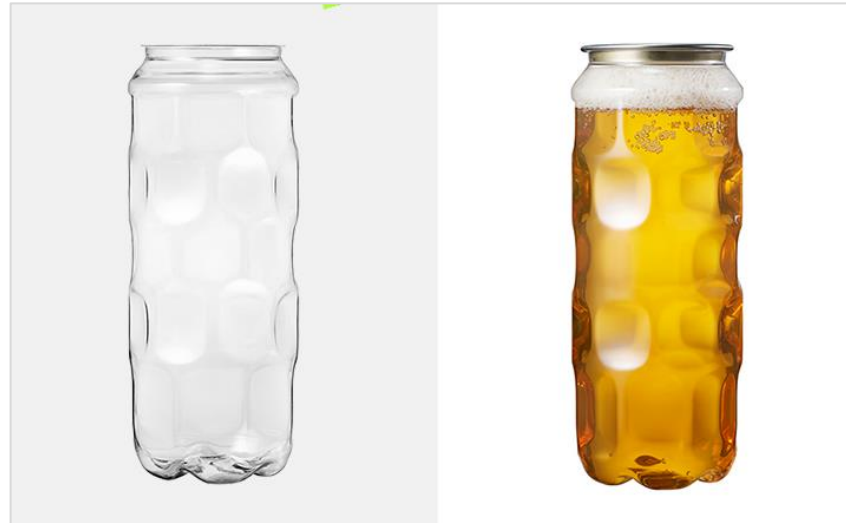
All empty cans are for lockcanroll Canseamer only

Third-party canned products may not be compatible.

When PET cans contain hot drinks above 60°C, there is a risk of shrinking the can and releasing harmful substances.

> PET 500ml /carbonic acid (16oz)

Sample Photo



- SIZE : 66 X 169 (mm)

All empty cans are products without lids (caps)

Currently, empty cans are only available in **iMAX1** or **X1 Canseamer**.

A Practical Use Case



202 type

AVAILABLE CANSEAMERS

- LCR-iMAX1
- LCR-X1
- LCR-A001
- LCR-C

NOTICE

All empty cans are for lockcanroll Canseamer only

Third-party canned products may not be compatible.

When PET cans contain hot drinks above 60°C, there is a risk of shrinking the can and releasing harmful substances.

> PET 500ml / jar (16oz)

Sample Photo



- SIZE : 79 X 140.8 (mm)

All empty cans are products without lids (caps)

Currently, empty cans are only available in **iMAX1** or **X1 Canseamer**.

A Practical Use Case



202 type

AVAILABLE CANSEAMERS

- LCR-iMAX1
- LCR-X1
- LCR-A001
- LCR-C

NOTICE

All empty cans are for lockcanroll Canseamer only

Third-party canned products may not be compatible.

When PET cans contain hot drinks above 60°C, there is a risk of shrinking the can and releasing harmful substances.

> PET 500ml / square (16oz)

Sample Photo



- SIZE : 60.5 X 168 (mm)

All empty cans are products without lids (caps)

Currently, empty cans are only available in **iMAX1** or **X1 Canseamer**.

A Practical Use Case



202 type

AVAILABLE CANSEAMERS

- LCR-iMAX1
- LCR-X1
- LCR-A001
- LCR-C

NOTICE

All empty cans are for lockcanroll Canseamer only

Third-party canned products may not be compatible.

When PET cans contain hot drinks above 60°C, there is a risk of shrinking the can and releasing harmful substances.

> PET 350ml / square (11oz)

Sample Photo



- SIZE : 61 X 116 (mm)

All empty cans are products without lids (caps)

Currently, empty cans are only available in **iMAX1** or **X1 Canseamer**.

A Practical Use Case



202 type

AVAILABLE CANSEAMERS

- LCR-iMAX1
- LCR-X1
- LCR-A001
- LCR-C

NOTICE

All empty cans are for lockcanroll Canseamer only

Third-party canned products may not be compatible.

When PET cans contain hot drinks above 60°C, there is a risk of shrinking the can and releasing harmful substances.

> PET 330ml (11oz)

Sample Photo



- SIZE : 66 X 115 (mm)

All empty cans are products without lids (caps)

A Practical Use Case



202 type

AVAILABLE CANSEAMERS

- LCR-iMAX1
- LCR-X1
- LCR-A001
- LCR-C

NOTICE

All empty cans are for lockcanroll Canseamer only

Third-party canned products may not be compatible.

When PET cans contain hot drinks above 60°C, there is a risk of shrinking the can and releasing harmful substances.

> PET 250ml (8oz)

Sample Photo



- SIZE : 66 X 91 (mm)

All empty cans are products without lids (caps)

A Practical Use Case



202 type

AVAILABLE CANSEAMERS

- LCR-iMAX1
- LCR-X1
- LCR-A001
- LCR-C

NOTICE

All empty cans are for lockcanroll Canseamer only

Third-party canned products may not be compatible.

When PET cans contain hot drinks above 60°C, there is a risk of shrinking the can and releasing harmful substances.

> PET 210ml /short (7oz)

Sample Photo



- SIZE : 72 X 70 (mm)

All empty cans are products without lids (caps)

Sealing is only possible in special molds

※ Special molds are purchased separately. ※

A Practical Use Case



202 type

AVAILABLE CANSEAMERS

- LCR-iMAX1
- LCR-X1
- LCR-A001
- LCR-C

NOTICE

All empty cans are for lockcanroll Canseamer only

Third-party canned products may not be compatible.

When PET cans contain hot drinks above 60°C, there is a risk of shrinking the can and releasing harmful substances.

> PET 210ml /long (7oz)

Sample Photo



- SIZE :56.5 X 97 (mm)

All empty cans are products without lids (caps)

Sealing is only possible in special molds

※ Special molds are purchased separately. ※

A Practical Use Case



202 type

AVAILABLE CANSEAMERS

- LCR-iMAX1
- LCR-X1
- LCR-A001
- LCR-C

NOTICE

All empty cans are for lockcanroll Canseamer only

Third-party canned products may not be compatible.

When PET cans contain hot drinks above 60°C, there is a risk of shrinking the can and releasing harmful substances.

> PET 500ml (16oz)

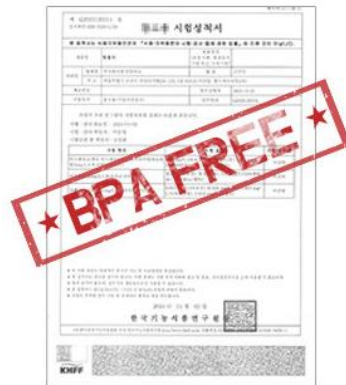
heat resistance

Sample Photo



- SIZE : 55 X 170 (mm)

All empty cans are products without lids (caps)



It is a heat-resistant container that can hold hot contents such as juice, coffee, and tea at temperatures close to 90~200°C.

Material: PC (polycarbonate)

Use this product with confidence as it is a reliable product that has passed the test with no bisphenol A detected.

A Practical Use Case



Heat-resistant cans may vary depending on their capacity and storage time, so be sure to test them before using them.

When sterilizing or disinfecting, we recommend that you undergo sufficient testing before use.

※ We are not responsible for any problems with product deformation during disinfection. ※

202 type

AVAILABLE CANSEAMERS

- LCR-iMAX1
- LCR-X1
- LCR-A001
- LCR-C

NOTICE

All empty cans are for lockcanroll Canseamer only

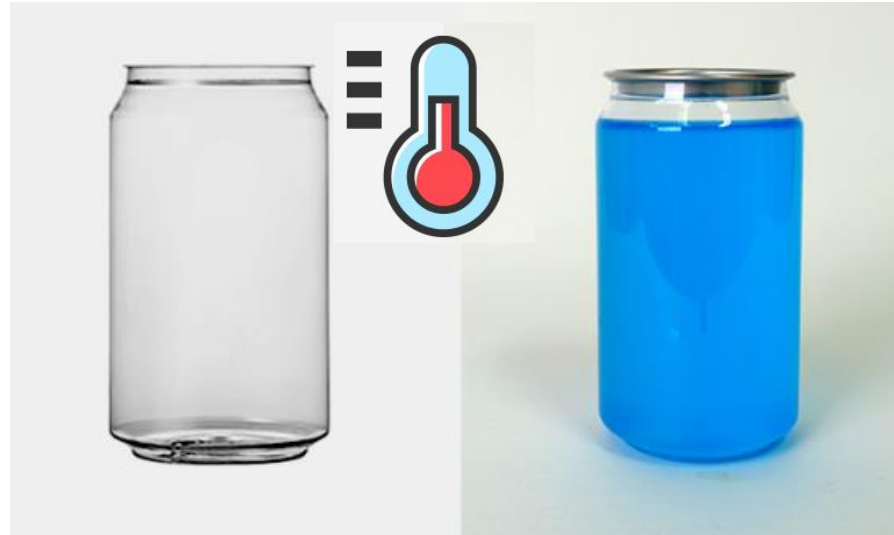
Third-party canned products may not be compatible.

When PET cans contain hot drinks above 60°C, there is a risk of shrinking the can and releasing harmful substances.

> PET 330ml (11oz)

heat resistance

Sample Photo



- SIZE : 66 X 115 (mm)

All empty cans are products without lids (caps)



It is a heat-resistant container that can hold hot contents such as juice, coffee, and tea at temperatures close to 90~200°C.

Material: PC (polycarbonate)

Use this product with confidence as it is a reliable product that has passed the test with no bisphenol A detected.

A Practical Use Case



Heat-resistant cans may vary depending on their capacity and storage time, so be sure to test them before using them.

When sterilizing or disinfecting, we recommend that you undergo sufficient testing before use.

※ We are not responsible for any problems with product deformation during disinfection. ※

202 type

AVAILABLE CANSEAMERS

- LCR-iMAX1
- LCR-X1
- LCR-A001
- LCR-C

NOTICE

All empty cans are for lockcanroll Canseamer only

Third-party canned products may not be compatible.

When PET cans contain hot drinks above 60°C, there is a risk of shrinking the can and releasing harmful substances.

> PET 500ml (16oz)

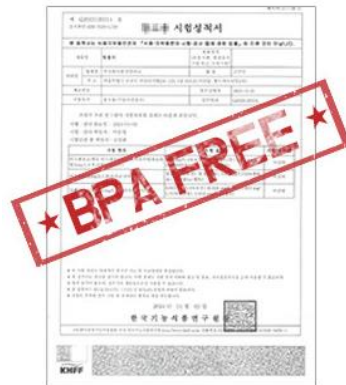
heat resistance

Sample Photo



- SIZE : 55 X 170 (mm)

All empty cans are products without lids (caps)



It is a heat-resistant container that can hold hot contents such as juice, coffee, and tea at temperatures close to 90~200°C.

Material: PC (polycarbonate)

Use this product with confidence as it is a reliable product that has passed the test with no bisphenol A detected.

A Practical Use Case



Heat-resistant cans may vary depending on their capacity and storage time, so be sure to test them before using them.

When sterilizing or disinfecting, we recommend that you undergo sufficient testing before use.

※ We are not responsible for any problems with product deformation during disinfection. ※

202 type

AVAILABLE CANSEAMERS

- LCR-iMAX1
- LCR-X1
- LCR-A001
- LCR-C

NOTICE

All empty cans are for lockcanroll Canseamer only

Third-party canned products may not be compatible.

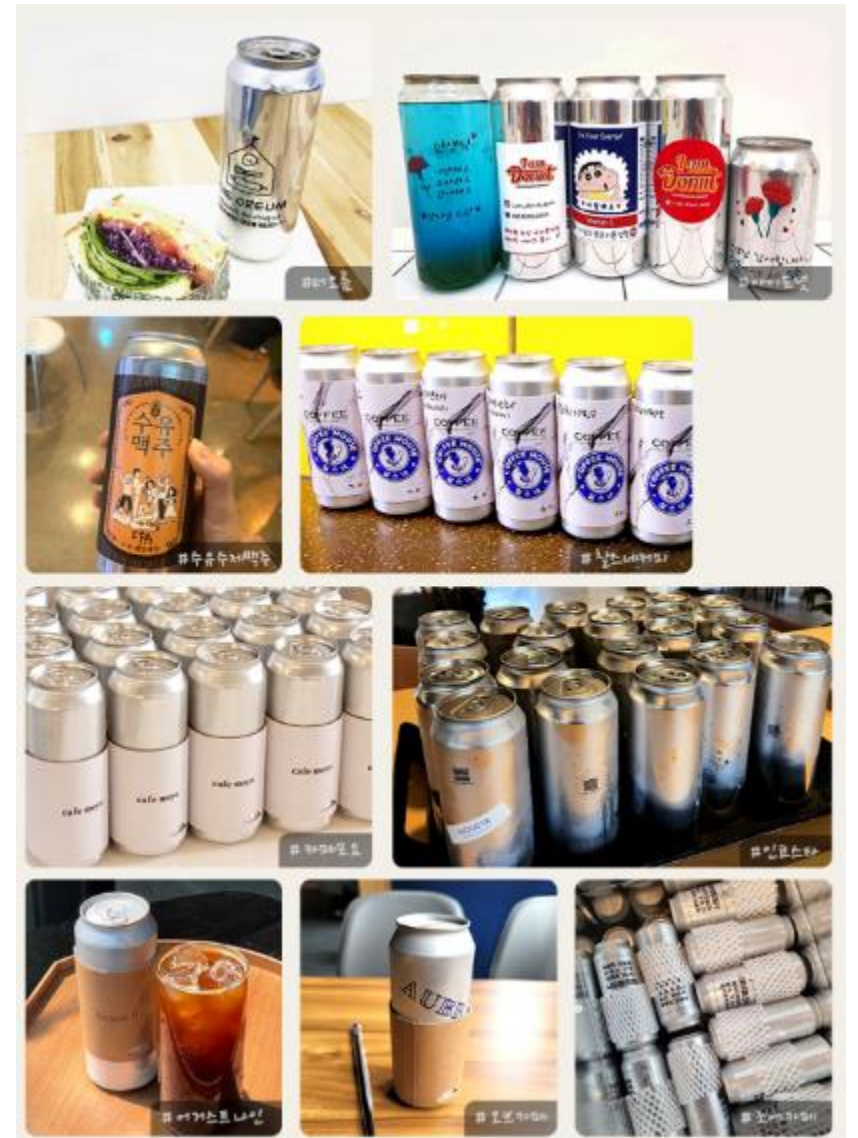
When PET cans contain hot drinks above 60°C, there is a risk of shrinking the can and releasing harmful substances.

> Aluminium 500ml (16oz)

Sample Photo



A Practical Use Case



- SIZE : 66 X 170 (mm)

All empty cans are products without lids (caps)

202 type

AVAILABLE CANSEAMERS

- LCR-iMAX1
- LCR-X1
- LCR-A001
- LCR-C

NOTICE

All empty cans are for lockcanroll Canseamer only

Third-party canned products may not be compatible.

When PET cans contain hot drinks above 60°C, there is a risk of shrinking the can and releasing harmful substances.

> Aluminium 330ml (11oz)

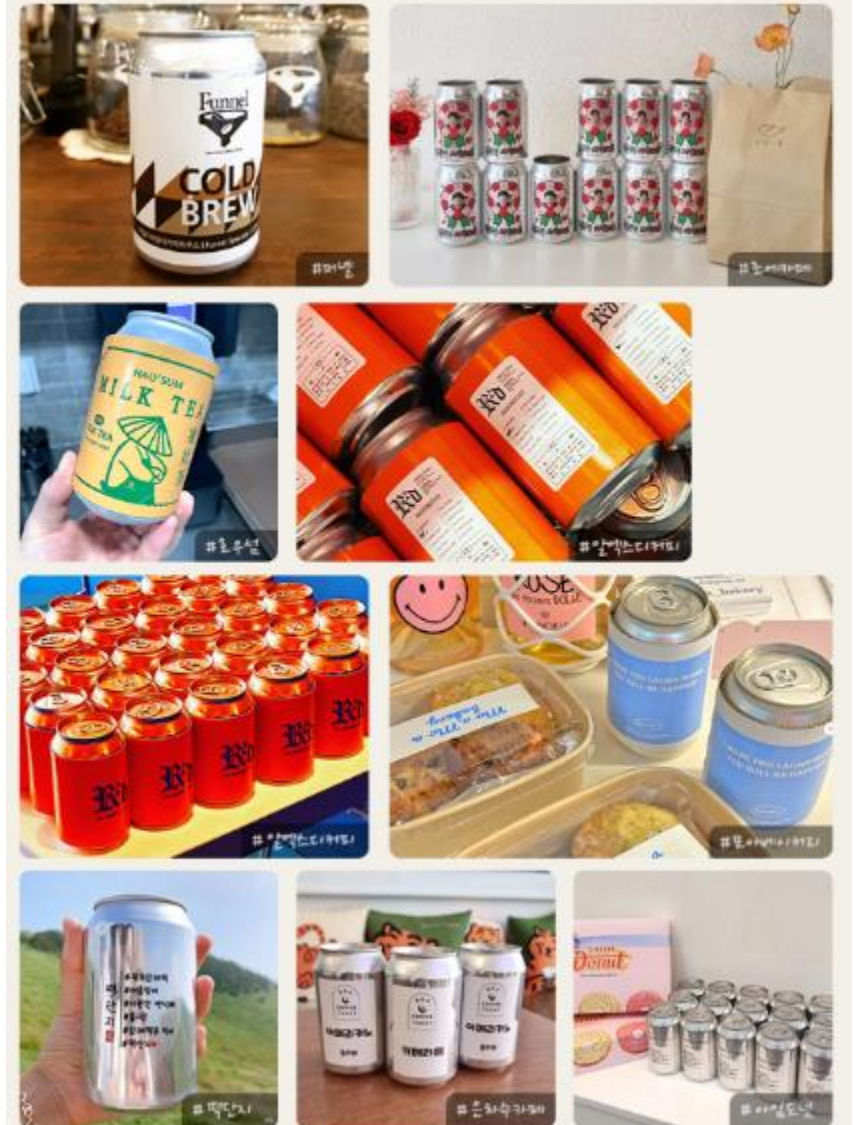
Sample Photo



- SIZE : 66 X 115 (mm)

All empty cans are products without lids (caps)

A Practical Use Case



202 type

AVAILABLE CANSEAMERS

- LCR-iMAX1
- LCR-X1
- LCR-A001
- LCR-C

NOTICE

All empty cans are for lockcanroll Canseamer only

Third-party canned products may not be compatible.

When PET cans contain hot drinks above 60°C, there is a risk of shrinking the can and releasing harmful substances.

> Aluminium 250ml (8oz)

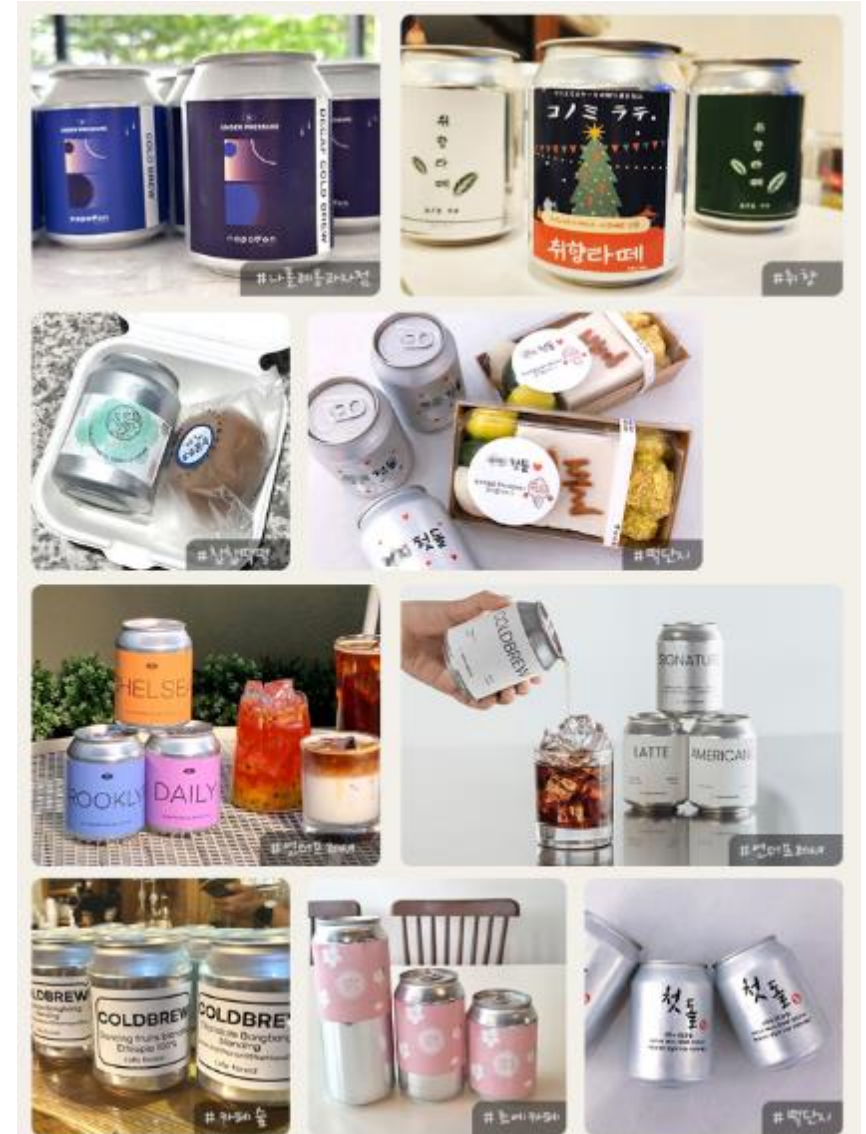
Sample Photo



- SIZE : 66 X 92 (mm)

All empty cans are products without lids (caps)

A Practical Use Case



202 type

AVAILABLE CANSEAMERS

- LCR-iMAX1
- LCR-X1
- LCR-A001
- LCR-C

NOTICE

All empty cans are for lockcanroll Canseamer only

Third-party canned products may not be compatible.

When PET cans contain hot drinks above 60°C, there is a risk of shrinking the can and releasing harmful substances.

> General cap (lid)

Sample Photo



- SIZE : 61 X 61 X 4 (mm)

This is a standard can lid. **Suitable for all forms of drink**

202 type

AVAILABLE CANSEAMERS

- LCR-iMAX1
- LCR-X1
- LCR-A001
- LCR-C

NOTICE

All empty cans are for lockcanroll Canseamer only

Third-party canned products may not be compatible.

When PET cans contain hot drinks above 60°C, there is a risk of shrinking the can and releasing harmful substances.

> Full open cap (lid)

Sample Photo



- SIZE : 61 X 61 X 4 (mm)

It's a can lid (cap) used for tuna cans and canned goods.
Perfect for snacks, desserts, or drinks with ingredients.

202 type

AVAILABLE CANSEAMERS

- LCR-iMAX1
- LCR-X1
- LCR-A001
- LCR-C

NOTICE

All empty cans are for lockcanroll Canseamer only

Third-party canned products may not be compatible.

When PET cans contain hot drinks above 60°C, there is a risk of shrinking the can and releasing harmful substances.

> Safety cap (lid)

Sample Photo



- SIZE : 61 X 61 X 4 (mm)

A can lid (cap) that keeps your hands from being cut.
It's good for snacks and desserts.

※ Caution ※

There is a risk of bursting if soda such as ade is sealed with a full open safety cap.

Please be careful when sealing for your safety.

We inform you in advance that we cannot take responsibility for problems caused by putting soda.

202 type

AVAILABLE CANSEAMERS

- LCR-iMAX1
- LCR-X1
- LCR-A001
- LCR-C

NOTICE

All empty cans are for lockcanroll Canseamer only

Third-party canned products may not be compatible.

When PET cans contain hot drinks above 60°C, there is a risk of shrinking the can and releasing harmful substances.

> PP cap (lid)

Sample Photo



Available only in aluminum cans



Available only in PET cans



- Can only be used on products sealed **with Lockcanroll Canesamer.**
- The PP lid is a lid used **after sealing the can.**
- Regular caps & safety caps & full open caps available in all types.

Thank you.



Phone cell : +82-2-6339-0754
email : resverafarm@naver.com

Fax : +82-2-6280-0754

[Showroom Visit Address]

Room 1302 (20th Daerung Techno Town, Gasan-dong, Gasan Digital 1-ro, Geumcheon-gu, Seoul)
Room 223, BIFFC Mall, 40, Muncashyul-ro, Nam-gu, Busan