

Reliable, low-center design  
for perfect sealing

## Lockcanroll Canseamer A

Automatic  
one-touch

Perfect  
Seaming

sure AS



## CHECK POINT



Korean  
production



One-touch full  
automatic



3 second fast  
seaming



Low-center  
Design



Compatible with  
various cans



sure AS

# Reduce fixed costs -! canseamer can be done alone!

**CANSEAMER CAN BE DONE ALONE!**



**Twice**  
Efficiency



drinks in various sizes  
For general packaging  
**About 10 seconds**

When packing canseamer  
an automatic sensor/without  
mold replacement  
**About 5 seconds**



Peak time &  
group order

Reduced number  
of additional inputs



Group order/mass  
Production

Increase work efficiency

**Now! For sure  
Compare!**



**No VS YES**

If you don't have A canseamer	<b>VS</b>	<b>Lockcanroll Canseamer</b>
Waiting & lead time Longer production time	Mass production A group order	<b>Lightly OK!</b>
For peak time Increased labor costs	Personnel Expense Fixed costs	<b>Alone OK!</b>
Delivery/due to A packaging accident Claims increase	Delivery& At the time of packaging	<b>Definitely OK!</b>



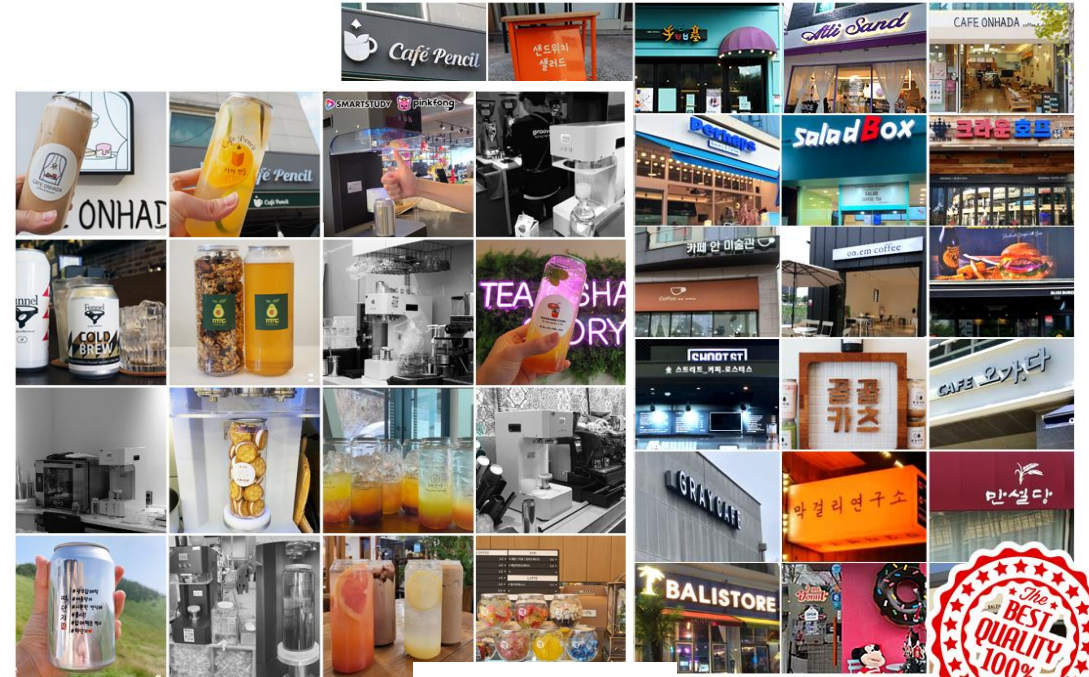
## CHECK POINT

# Why you need a canseamer!

- ✓ Keeps taste and freshness long by blocking air and sunlight
- ✓ Safe and complete sealed packaging delivery
- ✓ Enable special marketing of our products
- ✓ Use of recyclable environmentally friendly materials
- ✓ For those who want to reduce the use of plastic

# It's a product that many CEOs use themselves

Recognized lockcanroll canseamer



★★★★★ ....

## There's no limit to shilling!

Appeal to the customers for the event or service!  
It can be used in various forms, not drinks!

## Satisfaction of use Good!

## Easy operation for anyone

If you put the contents in and press it, the sealing is done!

### [ Easy Operation Way ]



1. put in



2. Press the button



3. The end of the sealing

## Default Shipping Mold

**330ml, 500ml**

If you request two molds, you can combine them.

## Additional molds

※ purchases separately ※

(short) 210ml, (long)210ml, 650ml  
(crystal)500ml

## Why do you need molds?

Each can has a different height, so it is sealed according to the height for a perfect sealing.

## What happens if the mold doesn't fit?

The can is not fixed, so it cannot be sealed normally, and the can and cap may be separated, so the contents may leak.

02/ POINT

## Convenient one-touch automatic method

One-touch automatic method, not manual type



[Other companies and existing products]

Manual lift method is inconvenient to work



[Lockcanroll Canseamer A]

**One-touch automatically convenient**

03/ POINT

## Low center of gravity design that does not rotate the can Perfect 3 seconds fast simming

The can doesn't spin, so it stays in the form of the drink



[low-center design]  
Maintain the form of the drink

[3 seconds fast seaming]  
Speed to resolve large orders

04/ POINT

## Premium Metal Case

Premium metal case that adds classicity  
One design that's perfect for everywhere you  
install it



05/ POINT

## Customizing New Technologies

Foot-activated push pedal function  
Hand-operated non-contact sensor function



※ The above optional  
features can be installed  
as a separate option.



# Technology certified patented product

## Reliable KC Certified Products

Possessing various certifications with unique patent-registered Products certified by the National Accreditation Inspection Agency

방송통신기자재종의 적합등록 필증 Registration of Broadcasting and Communication Equipments	
상호 또는 명칭 Trade Name or Register	주식회사 올벤티텍에스
기술명칭(제품명칭) Equipment Name	백세출력서버
기기종류(송수신기기번호) Equipment Code	KTC11
기종도명칭 Name Model Number	LCB-X11
의결도명칭 Name Model Number	LCB-X11, LCB-X13, LCB-X12
등록번호 Registration No.	R.R.11a-LCB-X11
제조업체명 Manufacturer/Company of Origin	주식회사 올벤티텍에스/한국
등록연월일 Date of Registration	2023-03-01
기타 Others	

본 기기는 「라디오법」 제18조제2항에 따라 등록되었음을 증명합니다.  
It is verified that Registering equipment has been registered under the Class 1, Article 18(2) of Radio Waves Act.

2023년 3월 1일 (Monday) 11일(Day)

**국립전파연구원장**  
Director General of National Radio Research Agency

※ 국립전파연구원장(국립전파연구원)은 「과학기술정보통신부」 산하에서 운영되고 있습니다.  
The National Radio Research Agency (National Radio Research Agency) is operated under the Ministry of Science and Information and Communications.

---



특허출원등록



벤처기업 인증

---



기업부설연구소 인정서



공장등록증명서

방송통신기자재적합인증

기업부설연구소

공장등록증명서



# DISTRIBUTION

## Securing a dedicated distribution network

Large distribution warehouses provide containers without a hitch

Aluminum/Have many PET 330, 500ml containers  
16oz 11oz




## Safe Lockcanroll can

Reliable safe empty cans passed FDA scrutiny

Detailed inspection of 11 chemical components, including antimony, nickel, and lead, is performed below the standard

Provide undetected and secure products.

 식품의약품안전처  
Ministry of Food and Drug Safety



PET 수입식품검사서

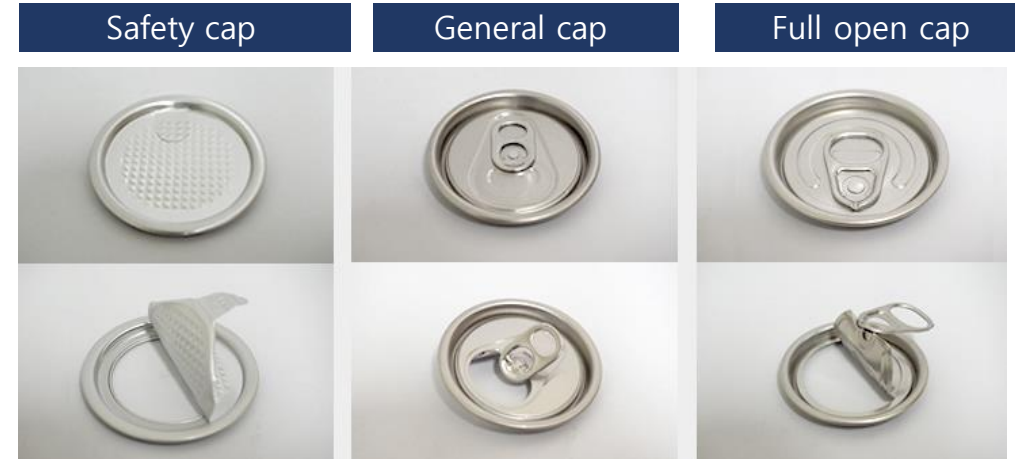
알루미늄 수입식품검사서

수입신고서확인증

# DISTRIBUTION

## Compatible cans and caps

You can use various cans to choose the size and material you want  
Compatible with different caps with all-round can-sealing



# UNIQUE LOCKCANROLL CANSEAMER

The difference in quality  
Feel it!



## SEAMING CHUCK

### The most important thing is seaming chuck

The seaming chuck is the most important thing for canned goods.  
A small error in the chuck determines the sealing level.

Lockcanroll canseamer  
seaming chuck is

**Through 100,000 processing tests**

You have captured  
the best simming point.



Outstanding quality / Just check this out.



## Low-center design The can is not spinning.

Keep the drink in its form without wavering even in high-speed rotation



## 3 seconds fast seaming All food and drink available.

Seaming chuck and double roller perfectly seam the airframe



## All empty can be sealed Various cans at once.

The size you want, the material you want  
Can be used in many ways at once



## Production of domestic certification Products certified for quality

Domestic R&D and production  
Products certified for technology and quality



## Questions

### **Q\_ Does the can run?**

A) The can is not spinning. Just the sealing chuck on the lid of the can. It doesn't mix.

### **Q Is the sealing going well?**

A) No matter how much you press, it doesn't leak and even carbonic acid is sealed. However, commercial products. It is recommended that you use it for delivery purposes without being semi-permanent.

### **Q\_ Are there many breakdowns?**

A) The main customer base is a cafe or beer delivery business. Most people seal more than 100 cans a day, but they're busy, so the customer can't pay. There are cases where it has been received, but there are few instrument defects.

### **Q\_ Is it compatible with third-party containers?**

A) Can compatible third-party products!/Make sure you send the sample to the headquarters. Please use it. If there is a problem after using it, the headquarters free A/Excluded from S.

### **Q\_AS What is the policy? (Warranty)**

A) Failure and defects caused by the buyer's negligence, such as external impact or flooding. If not, 1 year free A/S is possible.

## Precautions

- Never put cans in during the initialization of the cans.
- Use the supply voltage of the power supply to match the power consumption.
- Avoid moisture and use the machine in a dry environment.
- Never touch the seaming roller and seaming chuck while the machine is running.
- Please refrain from placing other objects on the machine or pressing it hard to prevent damage to the machine.
- Be careful not to open the back cover of the machine arbitrarily because it may cause an electric shock.

## Product information specification



**Product name**

Lockcanroll canseamer

**Model name**

LCR-A001

**Safety certification number**

R-R-VBG-LCR-A001

**Product size**

260 X 430 X 590 (mm)

**Product weight**

37kg

**Rated voltage**

110~220V/ 50~60Hz

**Power consumption**

260W

**Manufacturing company**

Human Company Co., Ltd

**Country of manufacture**

Korea

# Thank you.

---



(주)휴먼컴퍼니  
HumanCompany Inc.

Phone cell : +82-2-6339-0754  
email : [resverafarm@naver.com](mailto:resverafarm@naver.com)

Fax : +82-2-6280-0754

## [Showroom Visit Address]

Room 1302 (20th Daerung Techno Town, Gasan-dong, Gasan Digital 1-ro, Geumcheon-gu, Seoul)

Room 223, BIFFC Mall, 40, Muncashyul-ro, Nam-gu, Busan